

# QUINEBAUG VALLEY ENGINEERS



## The Zagray Quarterly

June 15, 2017

### PRESIDENT'S NOTES – George Lehr

Longtime member and QVEA director Al Bezanson passed away on June 6<sup>th</sup>. He was a dear friend and a tireless worker; he and his efforts at the farm will really be missed. A tribute to him at the farm is being planned. QVEA offers its condolences to Marge, Ed and all Al's relatives. We are diminished.

So, it is with some sadness that I make a statement about the nominations for election of directors in accordance with the QVEA Standing Rules. These are nominations for election to director positions vacated by Dave Dziomba's resignation and Al's passing. To this date, Mike Miner and Sean Mason have been nominated. Other nominations will be accepted up to the August meeting. Elections will be conducted at the October meeting, or for those who cannot attend the October meeting, with absentee ballots placed in the September newsletter.

On the brighter side, QVEA is now the owner of the Zagray farm! I'm hoping that it's a harbinger of great things to come. We've received some really nice donations and gotten indications that more interesting exhibits may be coming to the farm in the future. Has word of our taking ownership of the farm gotten out and caused this? I don't know, but the future is looking very good to me.

The May show was very successful, despite less than ideal weather conditions. Volunteers stepped up to support the show production effort. However, still greater volunteer effort is needed. We need an individual (or individuals) to assist/take over the vendor greeting/fee collection effort that has been provided by Mark Sloan for all our shows to date. Not only show related, Dave McClary needs someone to take on the Machine Shop Committee Chairmanship responsibility.

Hope to see you all at the July show.

### FROM THE DESK OF THE TREASURER – Art Chester

As of 6/14/2017 the deeds have been signed to transfer the entire property to QVEA. We now officially OWN the property, along with the Zagray Endowment which currently stands at \$370,000.00. The Colchester Fish and Game no longer leases the property as we bought out that lease earlier this month. Thanks to all who over the years refused to give up and gave countless hours in the pursuit of Harry's dream of a first class, active farm museum. Special thanks to members of the Colchester Historical Society for their foresight and perseverance to help make this a reality.

Don't forget to send in your 2017 dues or stop in to the Event Center at the Summer show. If you are mailing it, make your check payable to QVEA, and mail it to 180 South Plumb Road, Middletown, CT

06457. There's no need to fill out a new membership form, but if you have changes to your address, phone number or email, please include the changes. A stamped, self-addressed envelope is also welcome. Any and all donations beyond the dues are tax deductible and very much needed and appreciated!

If you have an email address, please email Dianne Tewksbury at [tewksbdk@outlook.com](mailto:tewksbdk@outlook.com) to change from snail mail! That will save our printing-sorting-folding-mailing crew some labor, and save your club a lot of money, as well as being environmentally 'green'.

For those of you who contribute to the United Way campaign, QVEA is now listed as a charitable organization allowing you to direct your donation to us for the support and expansion of the Zagray Farm Museum. The Pfizer Foundation also has a volunteer program that provides QVEA with substantial donations each year, based on the volunteer work of members who work or are retired from Pfizer.

### **Stationary Engine Building**

We have completed the interior lighting of this building and have only a small amount to do for the lighting under the rear shed. Dave is our master pipe bending guy. We are still thinking about what type of front exterior lighting we want. Next up is drain pipes for the front gutters, pour the exterior concrete, and install the gutters. A shelf across the rear of the building will give us more display area as well.

### **Atlas Imperial project**

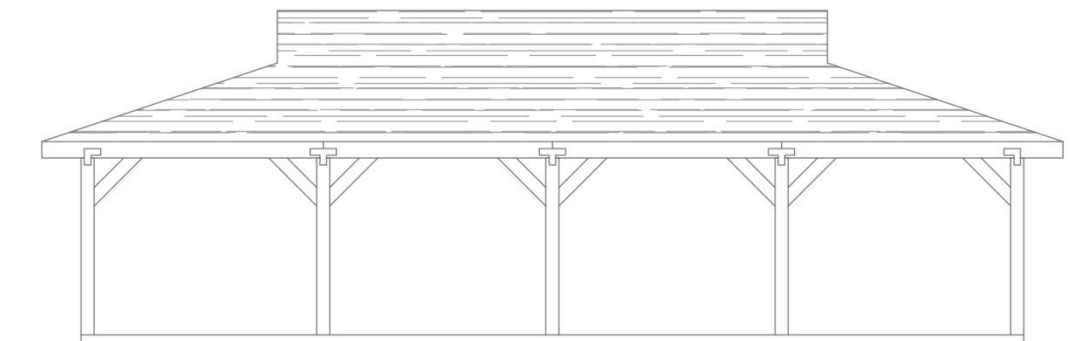
The engine is getting very close to returning to the Farm after a nearly 2 year restoration process. Many very talented hands contributed to this project – without them it never would have happened. As it is, we have a rare engine getting close to operational after not running for 60 odd years! Thanks to everyone who had a hand in making this project possible.

### **Saw Mill**

STILL NEED LOGS We still need logs for the saw mill. Even though we received a substantial number of logs, we are still on the lookout for more -- 16'6" pine logs in particular that are 20 inches diameter or more on the small end will make good rafters. 12'6" logs of similar size will be used for 2X4's and siding. We have a good supply, but having extra material in stock would be nice.

### **Pavilion Building**

This 36' X 48' structure might grow to 36' X 60' to allow for future expansion. Hopefully we have the room needed to fit the building between the Zagray Memorial Tractor and where the road gets narrower. We are still formulating the project, but have several great ideas and offers of assistance, which should make the project much easier and quicker. It is slated for completion this fall.



FRONT ELEVATION

## **CHS – QVEA – CF&G**

Judge Leeland Cole-CHU presided over the hearing and signed the order to allow the transfer of the property to go forward. Ironically, Judge Cole-Chu was (before he became a Judge) the attorney for the CF&G for the last time we were in court. Since all parties were in agreement this time, no one had any objection to him hearing this complaint. We have forwarded to the attorney for the CF&G the \$150,000 buyout of their lease and their rights to use the property. The closing on the property will be June 14<sup>th</sup> and probably completed by the time you receive this newsletter.

## **WANTED!!!**

**A SMALL rock crusher, preferably flat belt driven, to complement our screening plant!!!**

## **EQUIPMENT COMMITTEE – Co-Chair, Connor Bishop**

My main project recently has been setting up our machine shop that is in the repair shop up front. Last year we purchased a Bridgeport milling machine, and now it is moved to its final location and has been cleaned and oiled and is ready to be used by our members once it is wired to 3-phase power. Also, we removed the old Flathers lathe and replaced it with the Hendey that was originally there, because we found a 3-jaw chuck for the machine to make it easier to use. The Hendey is smoother and quieter, and also has 8 spindle speeds compared to two speeds on the Flathers. Once the lathe is wired up and a quick-change toolpost installed, it will also be ready to be used for projects around the farm. Lastly, I organized all the tooling, cutters, and bar stock that was in the area so it is clean and easy to find what you're looking for. We are in need of more milling machine tooling such as parallels, end mills (1/2" shank or smaller), flycutters, etc., so if anyone has such tooling that they don't need anymore, please consider donating it to the farm.

The Onan motor on the Miller welder that I've been repairing is still having issues. It starts and runs well, but the governor is totally non-functional so the engine runs wide open. If any of our members are familiar with Onan motors (the motor in question is a P216) and is willing to repair the governor or can give me suggestions on what might be wrong, it would be appreciated. I can be emailed at [themadmailler@yahoo.com](mailto:themadmailler@yahoo.com) or called at 203 313 5362.

Our HD11 dozer has been set aside for a much needed clutch job, and the D6 will be available should we need a dozer until the job is done. The TD14 that was going to stand in the place of the HD11 is in worse shape than expected; the steering clutches are frozen and the injection pump delivery valves and metering valve were frozen. There were several parts pumps on the farm, so I will disassemble them to see if I can make a good pump out of two. It will be a back burner project while we work on bigger projects like the Fairbanks Morse and Atlas Imperial engines, but hopefully it will be a functional machine by the end of the year. Also, our new Terex dozer is still in need of the sprocket and exhaust manifold replaced. Any members interested in taking on this project to get it running and operational are encouraged to do so.

Several months ago, I started an official Zagray Farm Museum YouTube channel. The channel can be seen here: [https://www.youtube.com/channel/UCYWzzkXaB\\_2Oi3iB1EHeyzQ](https://www.youtube.com/channel/UCYWzzkXaB_2Oi3iB1EHeyzQ). The goal is to reach out to potential new members and visitors through avenues other than flyers and signs. Also, when our channel grows in popularity, we will be able to monetize our videos and gain extra revenue for the farm. I have uploaded all of my own videos to the channel, but I want to encourage anyone else who has videos of their own and want them uploaded onto the farm's channel, to get in touch with me. I can edit, compile, and upload other people's videos to our channel. We can also use the channel as a

method to show our viewers the progress of our current projects, such as building new buildings or restoring equipment. I also have two tapes that I received from Ed Bezanson of our first visit to the farm back in 1999, and those videos will be uploaded to the channel once they are in digital format. If you have a YouTube account of your own, make sure to subscribe to the channel and watch a few videos! It will help the channel become more popular and boost our videos in the search results.

I have also been digitizing old photos of the farm in order to preserve them. If anyone has any photos of their own from when we first got our lease on the farm or any older photos of the farm, the Zagrays, or anything else related, please get in touch with me and I can scan them into a digital format.

Lastly, I want to encourage our other members to come to the farm to help out where they can. Whether you come over during a show to help man the entry gate or event center, help pick up trash, move boards at the sawmill, or any other of the numerous jobs available; or come over on non-show days to work on a project or piece of equipment you like, the help is appreciated! There is a huge amount of work required to run the show and keep our equipment running, and the more hands the better. I had a hard time getting involved myself, but after one or two projects the momentum got going! There are plenty of projects to work on so if you're interested in anything, ask me or anyone else for guidance to get the ball rolling.

See you at the Farm!

Connor Bishop

### **EQUIPMENT COMMITTEE – Co-Chair, Ethan Bailey**

Fairbanks Morse has had great progress made in the past few months. The generator and shaft took two full days to shim and align to factory specs. Assembly of the water manifolds (one main water manifold required four men to lift and install by hand) four manifolds on the top, one major one on the side, exhaust temperature wiring harness and temp probes installed. The plumbing for the air start system, cooling system and fuel system are currently being installed. The main oil pump has been cleaned and installed, the lubricator has been removed for cleaning, all oil lines and fuel injection lines have been cleaned. The fuel injector pump will be next for cleaning. Lots more to be done, but hoping to have it running for our fall show.



We've recently received some great donations: A big, heavy-duty wood planer and wood lathe. Note the wood lathe is good up to a 5 foot long piece of wood and will be a great addition for our "work in progress" Woodworking Building. One day we hope to power most of the various types of wood machines with a Line shaft mounted in the ceiling.

Currently, trenching power lines from the engine building to the woodworking building is about done and we are looking forward to getting power to this building. Second donation is either a self-feed corn silage chopper, or a self-feed wood chipper. There is no name or ID tag on it. Whatever its original purpose was required a heavy duty chipper, which makes me believe it was a wood chipper for a local paper pulp company. Any suggestions?



Our engine building is getting full of great stationary engines and more to come. We currently have more engines than carts to wheel them out for display. There will be a 10 foot cement pad around the



engine building to have as many engines as possible "running" in a safe environment. We need carts of all sizes because we have engines of all sizes. If you just have wheels and/or pieces and parts for making carts, they would be put to good use.



---

## Al's Obit

*My brother Al came into this world at the old Lawrence and Memorial hospital in 1935. His father Arthur worked for Radways Dairy in New London and his mom was a house wife until she went into teaching in the 1950's. They lived at 571 Vauxhall Street Ext., in Waterford, at a house his dad built pretty much from the ground up. Al started grade school at Cohanzie elementary school and finished at the original New London High. He went on the UCONN School of Agriculture in Storrs and earned a degree in nursery management. For a time in the 1960's he was in the Connecticut National Guard and trained as a radar technician at Fort Bliss, Texas.*

*After discharge he went to work at Comrie's Landscape Services in Mystic, CT. At Comrie's he landscaped many fancy homes along the Mystic and Stonington shore. During two summers in the 1960's he and his crew put in nearly 400 lawns at the Fieldcrest Estates in Groton. He was a consummate landscaper and could level out any pile of dirt with a tractor and his faithful iron rake. After 10 years at Comries he changed careers when he became a route salesman for the old Radway's Dairy where both his Father and Mother had also worked. He was one of the last door to door salesman before system was ended. Each day he drove his Divco milk truck door to door on a route in Groton's Eastern Point community. He would stop at each home and leave milk, orange juice etc. in a metal chill box on the front porch. This method of getting milk ended in the early 70's when convenience stores began popping up at nearly every gas station location.*

*When route delivery ended he went back to his first love of working in the dirt. He got a job with the Town of Waterford Park and Recreation Dept. where he remained until retirement in 1998. He eventually became the head of the Dept. and was responsible for all the school and park land management in the town. While there besides keeping the existing parks and schools in great shape he was also involved in building new ones around the town. He was very protective of town grounds even after he retired. If he saw a need for trimming of shrubs or pulling some weeds, even up till last September, he would go around town after hours and trim and keep his parks in top shape.*

After retirement from the town he soon found a part time job at the Peter Pan Bus company garage just up the road from his home. He was the head Gofor for the garage traveling all over the place to pick up or deliver parts to their various locations. One day he was picking up a big transmission at a rebuilder in Hannover, PA and the next day helping to deliver a bus to another location. He loved driving to all kinds of new locations and meeting new people. Of course he also kept the garage grounds mowed and trimmed and even plowed the snow in the winter. That was his last real job so when it ended he again started looking for a new project to get involved with.

Al was a member of the Quinebaug Valley Engineers Assoc. from its inception in 1993. The QVEA was founded at our Mudslinger picnic in Waterford. In the year 2000 the club was given a 99 year lease on The Zagray Farm in Colchester, CT. The farm was about 200 acres and covered with hundreds of pieces of old equipment. Of course Al saw many things that needed doing and immediately jumped in with both feet along with his trusty shovel and rake. He played a major part in one of our first big projects, the moving of the front wall along RT. 85. Over the years he has used his talents to landscape many areas of the farm as we moved outward from the front gate. If we dug a trench or built a building Al would follow up with his landscaping magic.

His last project was to clear the line of site looking north out of the driveway. Last fall he realigned the wall just past the entrance and built a dirt berm to keep runoff water from flowing down onto the north field. He used Art's little tractor and was out beside the road when the state inspector stopped for a chat. He asked Al if he had a permit to work on the state road? As usual Al struck up a conversation and sort of talked around the subject mentioning the need for a safer line of sight because of our increased show traffic. The inspector listened for a while and then just said to be safe and drove off. Only an 80 year old quiet gentleman like Al could ever get away with that. We all had a great laugh when he told about the encounter at a monthly meeting.

For the past 17 years Al played an important part in turning the farm into a world class Agricultural and Machinery Museum. His expertise in landscaping, tree science, wall building and grounds management made him an invaluable part of the clubs efforts in clean up and construction. His work at the farm will be greatly missed by the club and all its hundreds of members.

Al loved all kinds of antique machinery and over the years owned several tractors and various pieces of landscaping equipment. He also attended many antique tractor and construction shows with me. In 2011 he went with me and Ken Avery to the largest tractor show in the world in Rollag, Minnesota. He had also been to big shows in Pennsylvania, New York and Missouri. He was a people person and loved talking old tractors every where he went. He will be deeply missed by everyone he came in contact with during his life.

We are planning some type of memorial service for Al during our July Show. The Time and location will be advertised at the show.

I will miss my Older brother till its my time to join him in Tractor Haven.

Ed Bezanson

## **From the Secretary/Editor -- Dianne Tewksbury**

### **Zagray Farm Museum Shows**

Shows are held three times each year. The next three shows will be held on:

- the third full weekend in July (July 15 & 16, 2017)
- the first full weekend in Oct. (Oct. 7 & 8, 2017)
- the first full weekend in May (May 5 & 6, 2018)

You can find these date, lots of information, pictures and videos on our web site:

[www.zagrayfarmmuseum.org](http://www.zagrayfarmmuseum.org).

And, don't forget the Zagray Farm Museum YouTube channel that Connor has been working so hard to get started: [https://www.youtube.com/channel/UCYWzzkXaB\\_2Oi3iB1EHeyzQ](https://www.youtube.com/channel/UCYWzzkXaB_2Oi3iB1EHeyzQ)

### **PLEASE REMEMBER THAT IT TAKES A LOT OF VOLUNTEERS TO RUN THE SHOW!**

- Members need to help each other out! Volunteer and work with other members to cover the entrance to collect the money we dearly need to run the museum.
- It has come time that two members now need help. Both have been devotedly covering their specific areas from the very beginning!
  - Mark Sloan has been collecting from the vendors for nearly 17 years. Now he needs help!
  - Dave McClary has been manning the Machine Shop for the same number of years and now needs your help!

Please consider getting more involved in the club and the shows by volunteering to help.

#### **Club Officers and Contact Information:**

President: George Lehr	<a href="mailto:glehr@sbcglobal.net">glehr@sbcglobal.net</a>	Cell: 860-639-1213
V. President: Ed Bezanson	<a href="mailto:edwin_c_bezanson@sbcglobal.net">edwin_c_bezanson@sbcglobal.net</a>	Cell: 860-208-2422
Treasurer: Art Chester	<a href="mailto:artc@cmtelphone.com">artc@cmtelphone.com</a>	Cell: 860-982-5158
Secretary: Dianne Tewksbury	<a href="mailto:tewksbdk@outlook.com">tewksbdk@outlook.com</a>	Home: 860-537-2252/Cell: 860-884-1079

#### **Want to be a club Officer?**

Anyone who wants to run for one of the four officer positions can make their interest known to one of the board members or one of the officers before the August 30<sup>th</sup> meeting. During the October meeting, elections will be held for Officers as well as for Board of Directors. For those unable to attend the October general meeting, there will be an absentee ballot placed in the September newsletter which would need to be returned to the Secretary by October 15.

Dianne Tewksbury  
Secretary & Editor  
Zagray Farm Museum  
90 Park Road  
Colchester, CT 06415

**APPLICATION FOR MEMBERSHIP**

**QUINEBAUG VALLEY ENGINEERS ASSOCIATION, INC. (QVEA)**



NAME\_\_\_\_\_

STREET\_\_\_\_\_

CITY\_\_\_\_\_

STATE/ZIP\_\_\_\_\_

PHONE\_\_\_\_\_

E-MAIL\_\_\_\_\_

Dues are \$20.00 per person for one year, payable with application.  
Dues include liability insurance at the farm.

**RETURN TO: QVEA, 180 SOUTH PLUMB RD, MIDDLETOWN, CT 06457**